

GIA[®] *MBERARDINO S.r.l.*

Engineering Company

Geology
Engineering
Architecture

The **GIAmberardino S.r.l.** is leading engineering services constituted of qualified and specialized interdisciplinary technical figures, who have gained their experience through university research activities and professional activities; it was founded with the goal of providing services in engineering, architecture and geology to high professional and technology.

Figures within the company operate in synergy with the client planning all phases of the study, design and implementation, supporting the same interface with all participants in the process such as suppliers, contractors, regulators and providing progress reports and control that allow the customer to track the progress of the work and properly handle all actions necessary to achieve the desired results.

INFRASTRUCTURE AND TRANSPORTATION ■

PUBLIC AND PRIVATE BUILDING ■

FEASIBILITY AND PLANNING ■

ENVIRONMENT ■

SUPPORT SERVICES FOR PROJECT VERIFICATION AND VALIDATION ■

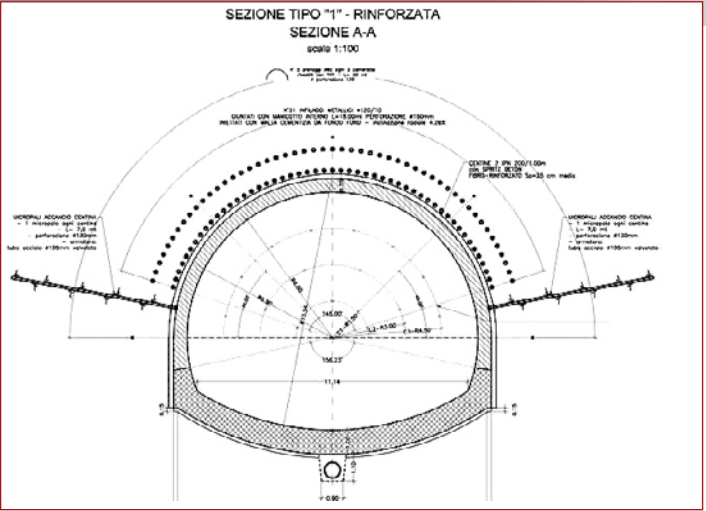
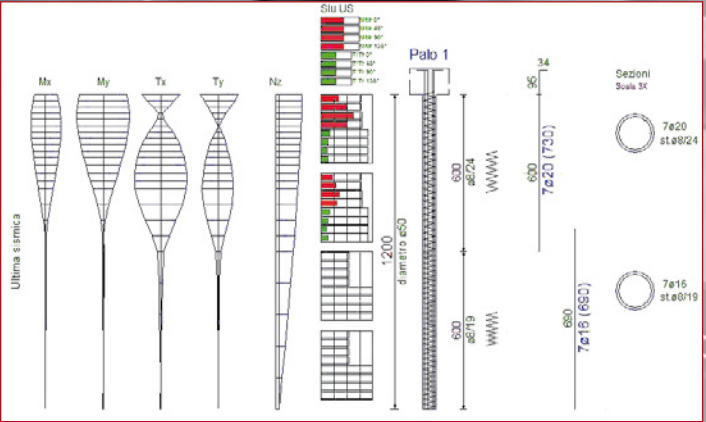
GEOTECHNICAL ENGINEERING AND APPLIED GEOLOGY ■

■ Infrastructure and Transportation

The design of infrastructure requires the contribution of a variety of professional disciplines with specific expertise in their respective fields and excellent knowledge of the objectives desired by the customer. This type of design represents the synthesis of all the activities of the **GIAmberardino S.r.l.** (geology, geotechnical engineering, structural engineering, architectural design, environmental studies and landscape, archaeological studies) to which are added others specific to the field of infrastructure, such as road design and hydraulics.

The Giamberardino ltd is able to perform the complete design of each type of infrastructure, thanks to the great experience it has gained in the course of his now more than ten years of activity in the execution and management of this type of orders reaching those levels of excellence that these types of projects require, with particular attention to large-scale works and commitments:

- Linear infrastructure
- Nodal infrastructure
- Terminal infrastructure.



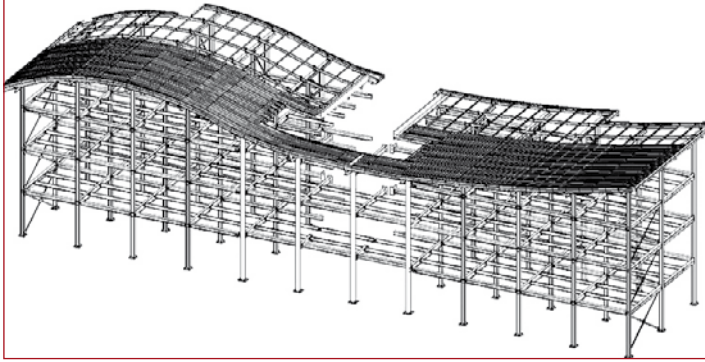
■ Public and private construction

Environmental impact, aesthetics, functionality, technical feasibility, financial feasibility, socio/economic sustainability, acceptability authorization, operational functionality, durability, utility and comfort are factors and requirements important for construction quality.

Whatever the field of professional commitment in construction,

- Institutional
- Public
- Residential
- Commercial
- Exhibition and Cultural
- Industrial
- Hospital
- Sports and Leisure
- Tourism

The professionals of the company, architects and engineers and technicians in general, are used to working together with designers, technical specialists, financial experts, market consultants,, legal and administrative, in order to prepare the product more balanced in relation to the complex of situations and specificity that characterize the project.



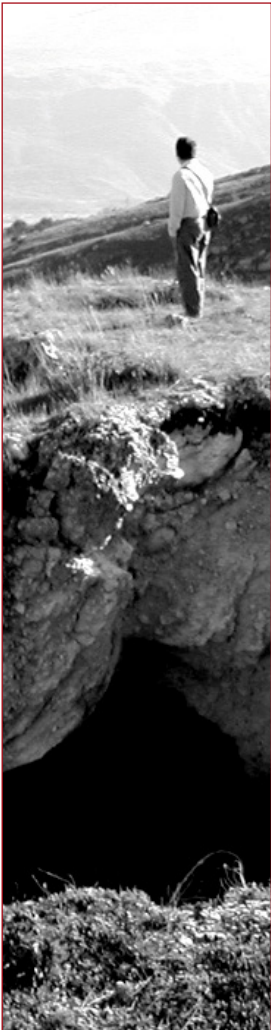
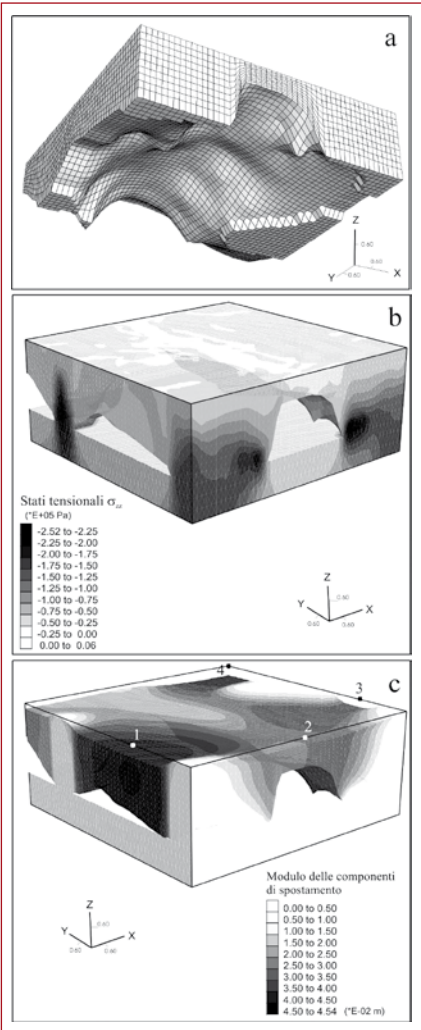
Laminated wood structures with integrated photovoltaic systems implemented in the municipalities of Santa Marinella and Allumiere (Rm) as a result of a program agreement drawn up between Enel Green Power and Municipal Authorities.

Environment

The experience gained in the field of environmental engineering and land-use planning can deal with multi-disciplinary approach the various issues in the field: the prior knowledge of the environment in here you will be working, forecasting of possible alterations that produce the work, from the definition of the works of mitigation, the overall management and integrated interventions designed for the development and deepening of solutions alternatives. Acquisition in the last 10 years of qualified orders, which presupposed, as far as possible, a high content of know-how, they did reach the environmental division of **GIAmberardino S.r.l.** a leading position that can rely on skills that enable it to operate better in various fields of activity:

ACTIVITIES

- Environmental impact
- Strategic environmental assessments
- Prevention, mitigation and recovery
- Natural resource management
- Waste management and remediation activities
- Management of the landscape and visual impact
- Site characterization, risk analysis and environmental rehabilitation
- Plans; advice and design of treatment plants and waste disposal
- Renewable energy, solar, wind, geothermal,
- Environmental services and customer support in dealing with authorities.



Support services for design verification and validation

Through its staff, formed in the different experiences that led him to hold office and administrative leadership within public and to interface with reality both entrepreneurial and professional throughout the national territory, **GIAmberardino S.r.l.** is able to support and support agencies in the fulfillment of design validation according to Presidential Decree 207/2010, giving them accurate reports on various aspects both formal and substantial that make up a project in order to make it executable within planned cost and expected minimizing the “risk” connected with litigation work in progress. The engineering company **GIAmberardino S.r.l.**, is enabled to carry out the verification and validation of projects and assistance to the RUP, having achieved the quality certification UNI EN ISO 9001:2008, and can supply to contracting a collaboration for all different levels of the design through figures multidisciplinary, through a coordinated activity, guarantee the quality of the design and construction of public works, ensuring:

- The completeness of the design
- Consistency and completeness of the economic framework in all its aspects
- The conditions for quality work in time
- Inimization of the risk of introduction of variants and litigation.

REGOLAMENTO PER LA VERIFICA DEI PROGETTI	
AFFIDAMENTO DELLE VERIFICHE A STRUTTURE TECNICHE ESTERNE	
Soggetti abilitati	Importo dei lavori
Organismi di ispezione di Tipo A E C ai sensi della UNI CEI EN ISO/IEC 17020 (ex UNI CEI EN 45004)	Tutti gli importi e in particolare > 20.000.000 €
Strutture tecniche certificate ai sensi della UNI EN ISO 9001:2000: <ul style="list-style-type: none">- liberi professionisti singoli o associati;- società di professionisti;- società di ingegneria;- raggruppamenti temporanei dei soggetti sopra indicati;- consorzi stabili di società di professionisti e di società di ingegneria anche in forma mista.	Importo < 20.000.000 €
Deve essere garantita l'assoluta separazione, sul piano tecnico, procedurale, amministrativo e finanziario, tra le attività ispettive e altre attività con queste potenzialmente conflittuali.	
Necessaria la comunicazione al servizio Tecnico Centrale del Consiglio Superiore dei Lavori Pubblici.	
Strutture tecniche non certificate ai sensi della UNI EN ISO 9001:2000: <ul style="list-style-type: none">- liberi professionisti singoli o associati;- società di professionisti;- società di ingegneria;- raggruppamenti temporanei dei soggetti sopra indicati;- consorzi stabili di società di professionisti e di società di ingegneria anche in forma mista.	Importo < 1.000.000 € per opere puntuali
	Importo < 5.000.000 € per opere a rete

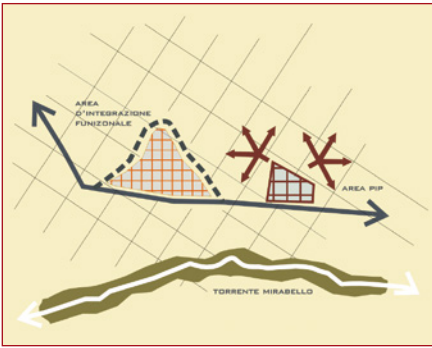
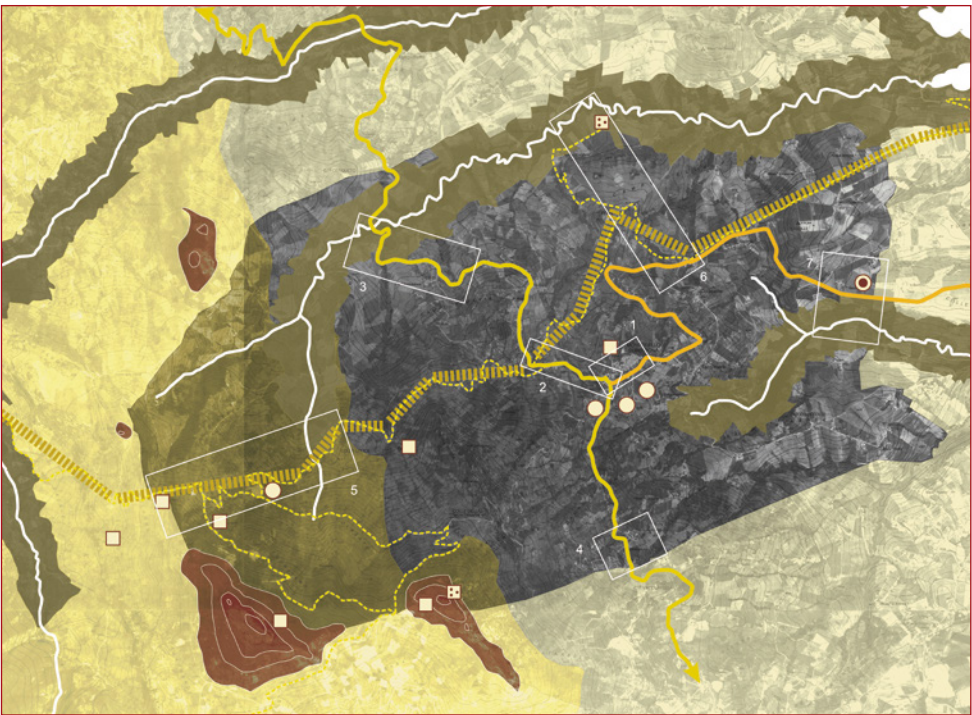
Feasibility and planning

Experiences and skills developed in different areas of engineering and architecture, combined with the multi-disciplinary approach to allow **GIAmberardino S.r.l.** to successfully address the complex issues of planning, whether it is to develop the technical and economic feasibility or environmental sustainability of individual projects, whether you need to plan and control the redevelopment of an urban or a polluted site redevelopment, or study a program of infrastructure networks or protection and optimal management of natural resources. The integration of cultures of technical skills (engineers, architects, planners, geologists, archaeologists, agronomists, scientists and environmental mobility, etc.) with those of the social, legal, economic, financial, enabled **GIAmberardino S.r.l.** to support successful Public and Private customers in the formulation of important programs, with particular reference to development projects and redevelopment of urban areas. Professionals of the company have evolved over the years a natural ability in the field of economic evaluations, the partnership between the public and private sectors and Project Finance in the knowledge that the private sector will play an increasingly important role in economic development and projects of general interest, moreover, inside of a system of rules which the public part must be able to ensure, organizing and structuring adequately.

Projects have been developed in the following categories:

- General land use plans
- Urban renewal programs
- Programs to real estate development
- Environmental restoration and remediation studies
- Feasibility studies of logistics platforms
- Studies and analysis of traffic

The approach is based on interdisciplinary work that is carried out through the collaboration of a group of professionals specialized in different environmental sectors, to ensure, in the individual areas of intervention, completeness and integration of contributions. Through its organizational structure, the company is able to operate both on a regional and national level, targeting large enterprises to public and private.



City of Montebello di Bertona (Pe - Italy)
Analysis of spatial interpretation and description of smaller urban areas developed along the main road crossing the town for which, in order to adopt a rehabilitation program were recruited the following specific objectives: improvement of system of existing public spaces and latent protection of environmental values; adoption of compensatory mechanisms of equalization.

■ **Geotechnical Engineering and Applied Geology**

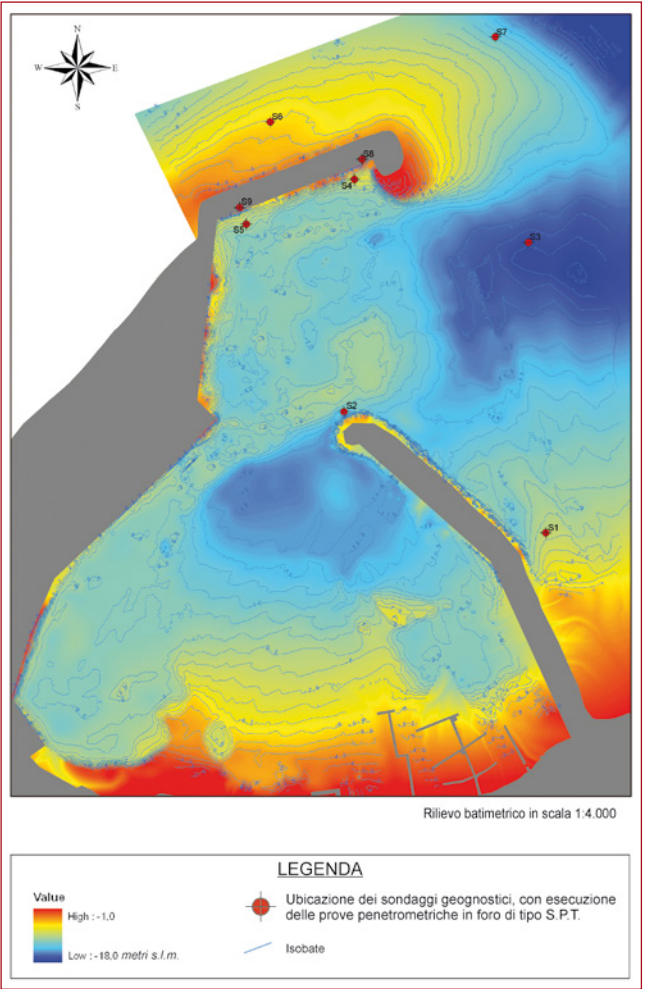
The sector is aimed at designing geotechnical works interacting with the ground: foundations of artifacts, retaining walls, earthworks, underground works, rehabilitation of instability. The skills of Giamberardino ltd embrace the whole range of Civil engineering: transport infrastructure, power plants, offshore platforms, industrial buildings and civil works for the stabilization of slopes, earth dams. The services offered include

■ **in the planning stage:**

Geotechnical consultancy to design structures, final design of the foundation works and support of earthworks, the treatment of the land, systems of pre-consolidation and support of the first phase to the galleries, the final lining of the same, preparation of specifications techniques detailed for the execution of special foundation work and support and for interventions of soil treatment, the design of the works of construction site;

■ **in construction phase and operation:**

Assistance to the construction Management Company or executor, design of monitoring systems, analysis of the behavior of the finished works, acceptance tests. This sector is supported in an integrated partnership with the sector of, “Applied Geology” which, in addition to providing the necessary support and assistance to other sectors, is mainly directed to the problems of “Geological risk” and develops in particular the following activities.



ACTIVITIES

In the field of geology and hydrogeology:

- Geological and geological – technical reliefs, with preparation of thematic maps (geological, geomorphological, structural, hydro geological, vulnerability, land use, etc.).
- Studies and applied geomorphology geomechanical surveys addressed to problems of landslides or digging in the earth and rock,
- Development of geological characterization - technique for seismic, geological studies to support planning;
- Research and hydrogeological studies for uptake of water wells for development projects water use, assessing the potential of aquifers;
- Assistance to the project manager and supervised to the execution of foundation work, earthworks construction of road and rail pads and hydraulic works,
- Programming geological surveys including the preparation of technical specifications and the organization and management of campaigns, site investigation,
- Development, interpretation and graphic representation of the data of geological campaigns.

In the field of environmental geology:

- Research and qualification geological, geomorphological and hydrogeological site for the construction of landfills for municipal and industrial waste,
- Assessment of the state of pollution of contaminated sites
- Studies of monitoring and measurement of parameters of interest Environmental
- Hydrogeological studies of vulnerability
- Models of diffusion of pollutants in groundwater;
- Calculating, processing and interpretation of water balance
- Studies component of the soil and subsoil for the preparation of environmental impact assessments.

Comune di Lecco (Lc - Italy)
Modello digitale
del terreno (DTM)



Geologist Camillo Giamberardino ■
Engineer Angelo Giamberardino ■
Architect Rosanna Giamberardino ■

Registered Office

Via Cerrani, 27 - 66010 Pretoro - Ch
tel. 0039 0871898023 - fax 0039 0871898908
VAT and tax code no. 02137140691
info@studiogiamberardino.it - giamberardino@postecert.it

www.studiogiamberardino.it



ACCREDITATIONS AND CERTIFICATIONS ■

The Company has a quality management system complies with the UNI-EN ISO 9001:2008 for the sector number 35, *DESIGN AND PROVISION OF SERVICES IN THE FIELD OF CIVIL ENGINEERING, ARCHITECTURAL AND GEOLOGY.*



SISTEMA DI QUALITA' CERTIFICATO